



# The Bury Farm Elite Show Jumping Festival

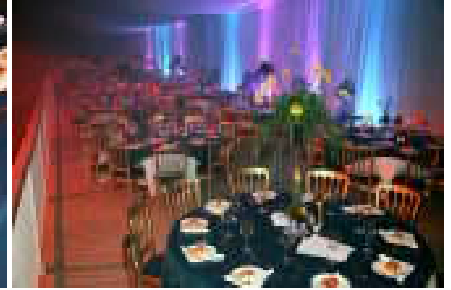


**Thursday 2<sup>nd</sup> to Sunday 5<sup>th</sup> February 2012**  
**Gala Night on Saturday 4<sup>th</sup> February 2012**

## Gala Hospitality & Sponsorship Information

**Bury Farm Equestrian Village,  
Mill Rd, Slapton, Buckinghamshire, LU7 9BT**  
**Tel: 01525 222114, [www.buryfarmequestriancentre.co.uk](http://www.buryfarmequestriancentre.co.uk)**  
**Email: [events@buryfarmestates.co.uk](mailto:events@buryfarmestates.co.uk)**





*Treat Yourself, Dine In Style & Enjoy The Night In Luxury*



## V.I.P. RINGSIDE HOSPITALITY



SATURDAY 4<sup>TH</sup> FEBRUARY 2012

*The perfect evening whether it is for a Corporate Night Out,  
Entertaining Guests, Celebrating a Special Event or just to have Fun.*

Starting at 6.30pm with a Champagne & Canapé Reception



Followed by Fine Dining with our  
Chef's Five Star 3 Course Meal  
Inclusive Red & White Wine  
Waiter/Waitress Dinner Service  
Fully Licenced Bar



Followed by an After Show Party & Disco till late

All this while enjoying:

**Jive Pony the UK's Premier All Female Equestrian Display Team**  
**Geoff Billington's Hilarious Show Jumping Master Class**  
**Dressage Masters Pas de Deux with Anna Ross Davies & Roland Tong**  
**£7,500 MOËT & CHANDON MASTERS**

To book call Tel: 01525 222114 or email [events@buryfarmstates.co.uk](mailto:events@buryfarmstates.co.uk)

Priced @ £65 Per Person    Tables Set For 10.

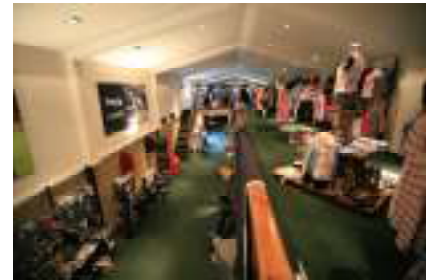
*Dress Code: Black Tie Preferred or Lounge Suits*

(We are happy to take bookings from smaller groups and we will then make table numbers up)





## Bury Farm Sponsorship Packages



Bury Farm Equestrian Village holds over 180 equestrian events each year and it has a unique position of being the UK's only purpose built Equestrian Village. With approx. 100,000 people a year walking in through the front gate and approx. 400,000 annual hits on our website you have the perfect opportunity to promote your business, product or brand and know you will be guaranteed value for money. We offer the perfect environments for B2B and B2C opportunities.

We have a wide variety of sponsorship packages available to suit all levels of marketing budgets. We can tailor any package to meet your specific requirements to make sure we have a package to suit you. We have a wide variety of opportunities to meet all your needs from advertising boards, show sponsorship to arena naming with many other opportunities besides.

- Specialist Corporate Events Tailored and Branded for your company
- 5 Star Hospitality Packages for Gala & Themed Nights
- Product Sales and Promotions through our onsite shop New Bury Supplies
- Venue & Arena Naming Rights
- Show and Class Sponsorship Opportunities
- Arena & Site Advertising Boards
- Product Placement
- Marketing Opportunities through Bury Farm Equestrian Village's Database
- Website Adverts and Links
- Trade Stands





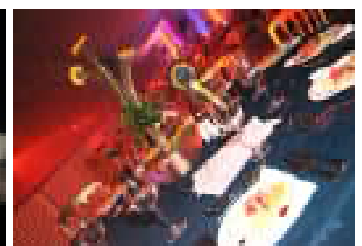
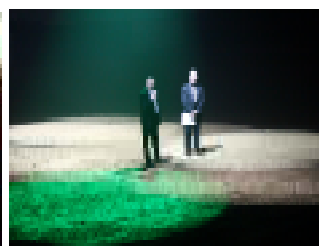
**Bury Farm Equestrian Village** is setting new standards in equestrian facilities with the UK's newest purpose built indoor arena. The new arena leads the way in bringing together both equestrian sport and entertainment. Linked together in an environment that is perfect for both the corporate VIP and the enthusiastic fan.

To give you a little background to our venue, Bury Farm Equestrian Village has been carefully created over the past 5 years from a buffalo farm (I kid you not!) to one of the most state of the art equestrian facilities in the country. You will see that our current facilities within the 300 acre site are fantastic, and this coupled with the completion of our £1.4 million International Arena as part of our continued development will cement Bury Farm's commitment and desire to be a serious contender in the competitive equestrian world. Following on from the success of our inaugural gala event in October we are now setting the stage for a second spectacular evening.



Bury Farm Equestrian Village is a BHS Highly Commended Approved Equestrian Venue and facilities include:

- Business Conference & Meeting Facilities
- Fully Licenced Café, Restaurant & Bar including Corporate Hospitality
- Riding School
- Full, Part & DIY Livery Yard
- 8,500sqft Equestrian Retail Facility – New Bury Equestrian
- On Site Veterinary Service – Chiltern Equine Clinic
- On Site Master Saddler & Equine Laundry Service
- Multi – Discipline Event Facilities including:
  - New Indoor Competition Arena
  - 3 x Indoor Competition/Training Arenas
  - All Weather Outdoor Arena
  - Full BE80 & BE90 X-Country Courses
  - X-Country Training Fences Field
  - 8.5miles of Off Road Tracks
  - Lunge Pen, Horse Walker & Wash Bays





**Bury Farm Elite Show Jumping Festival**  
*Incorporating the £7,500 Bury Farm Masters Grand Prix*

**Thursday 2<sup>nd</sup> to Sunday 5<sup>th</sup> February 2012**

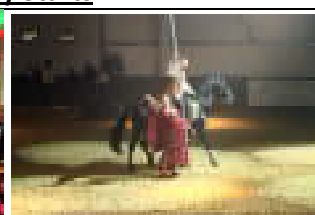
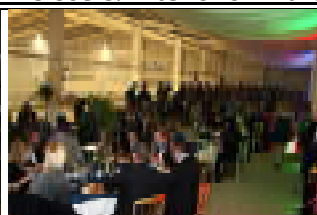
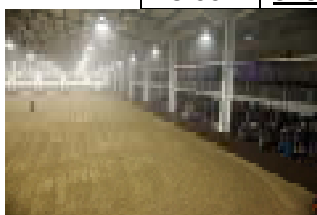
Bury Farm launches its inaugural Elite Show Jumping Festival to be held in the UK's newest indoor equestrian arena. Top international show jumpers will be able to compete for a total prize fund of £25,000 over four days of competition. Classes for riders will range from Newcomer to Grand Prix and also include qualifiers for the Blue Chip Winter Show Jumping Championships.



Riders will have to qualify through classes on Thursday and Friday to earn the opportunity to compete for the £7,500 prize fund in the **MOËT & CHANDON MASTERS**, which will form part of a spectacular evening of entertainment and sporting action on Saturday evening.

Our 600 seat grandstand will be full as we open the doors to the public for our gala night with an evening which will have something for everyone. You have the opportunity to enjoy the night in our new 5\* hospitality suite with ringside viewing while being wined and dined. Our hospitality is perfectly suited to all corporate guests, equestrian owners, sponsors and those that want to enjoy their night in style.

<b><u>THE BURY FARM ELITE SHOW JUMPING FESTIVAL</u></b>	
<b><u>GALA NIGHT TIME TABLE</u></b>	
<b><u>FOR SATURDAY 4<sup>TH</sup> FEBRUARY 2012</u></b>	
19:00	<b><u>Show Opening</u></b>
19:05	<b><u>Jive Pony</u></b> <i>The UK's Premier Female Equestrian Display Team performs the first part of an action filled display.</i>
19:25	<b><u>Dressage Master Pas de Deux Special</u></b> – International Dressage Riders Anna Ross Davies and Roland Tong perform in a specially choreographed and highly entertaining dressage display.
19:55	<b><u>International Jumping Master Class with Geoff Billington</u></b> – Well known as one of the sports funniest and most loved personalities, Geoff will be bringing his own brand of master class to the arena.
20:30	<b><u>Jive Pony</u></b> <i>The UK's Premier Female Equestrian Display Team performs the second part of an action filled display.</i>
20:50	<b><u>Interval</u></b>
21:20	<b><u>Course Walk, Rider Interviews</u></b> – <i>As the senior riders walk the Grand Prix Course we will hear their thoughts.</i>
21:30	<b><u>MOËT &amp; CHANDON MASTERS</u></b> – <i>35 of the best riders in the country will fight out to see who wins the £3,000 first prize over the 1.45m Grand Prix Course</i>
22:55	<b><u>Presentation &amp; Prize Draw</u></b>
23:00	<b><u>Show Close &amp; After Show Party Starts</u></b>





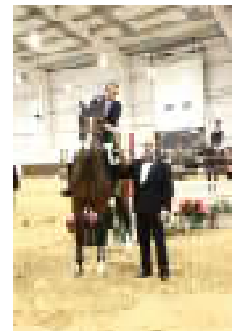
## Bury Farm Elite Show Jumping Festival

Thursday 2<sup>nd</sup> to Sunday 5<sup>th</sup> February 2012

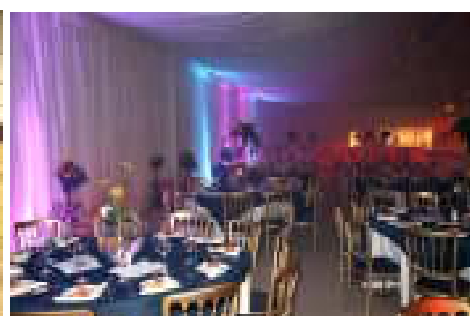
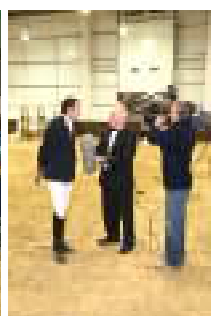


A little information about the Show:

The aim of the Bury Farm Elite Show Jumping Festival is to encourage and enable top riders and horses to compete over the course of the four days. We start each of the first 3 days with a Newcomer competition (Height 1.10m) which is the starting level for a young professional horse. With the inclusion each day of a Foxhunter competition (Height 1.20m) which is the next level up, this is planned to enable riders to bring their younger and more novice horses to compete in a big show environment. The Village is a facility open for all and the inclusion of a 1.15 Open competition on Thursday & Friday will enable many local and amateur riders to compete at the Elite Show Jumping Festival, as this regularly proves to be a very popular class. We include a bonus for the best placed rider from Bucks, Beds & Herts. The 1.30m Open classes will give riders a chance to compete for good prize money with £4,200 on offer in these competitions throughout the show. The 1.30m classes will also be the perfect warm up for the Moët & Chandon Masters. On Sunday we will hold three qualifiers for the Blue Chip Winter Show Jumping Championship. These include the qualifiers for the B&C, Foxhunter and 1.25m Open Championship.



The MOËT & CHANDON MASTERS competition sees the top 15 from Thursday and the top 15 from Friday qualify for Saturday's final. With big courses and big prizes, riders will compete for a £3,000 prize fund on day one and two, with £7,500 on offer in the MOËT & CHANDON MASTERS. Fences in the MOËT & CHANDON MASTERS will start at 1.45m which is guaranteed to produce equestrian excellence and sporting drama.





A little information about our display:



## Welcome to Jive Pony

Ladies and gentlemen, welcome to the UK's premier female equestrian team. Jive Pony has been delighting audiences with their unique style of horsemanship all over the UK since 2005.

The equestrian display team wow the crowds up and down the UK every year with their vaulting skills, fast paced stunts and an incredible show of horse control. All this is blended with the glamour and music from West End favourites like Grease.

This show incorporates as many of the equine tricks, dances and stunts that we could squeeze in. Breath-taking vaulting, Roman riding, skipping horses, equine dancing, bubbly commentary from both Rebecca and Rosie with plenty of mischief from our 'Glamorous Assistant' and of course our world famous tongue-in-cheek striptease costume change!



If you are looking for fast paced main arena show you've found it with Jive Pony, the UK's only female equestrian display team!

Jive Pony is guaranteed to leave the audience wanting more, while the event will have everyone talking about it long after they have returned home.

A truly great show that is always brilliantly received.





A little information about our display:



## Dressage Masters Pas de Deux With International Riders Anna Ross Davies and Roland Tong

For one night only two of the country's leading Dressage Riders have put together a very special display to entertain us. Full of lively music and stunning dressage movements our two riders have choreographed a magical routine. For anyone new to the world of Dressage a Pas de Deux sees our two riders' perform their movements in perfect symmetry together in the arena. We also have the chance to hear from both Anna and Roland who are known for their humour, so expect a plenty of laughs as they take us through what has gone in to preparing this routine.



**Anna Ross-Davies** is an International Grand Prix dressage rider and freelance trainer. She has represented Great Britain at Grand Prix all over the world including, amongst many others, at the European Championships, the Aachen CDIO, the Saumur CDIO, on the World Cup Circuit, and has twice competed at the World Championships for Young Horses

**Roland Tong** at just 32 years old has won numerous titles both national and regional from Novice to Advanced. He has secured hundreds of top 10 placings and has won multiple Young Horse titles including 4, 5, 6 year old classes, as well as Supreme Shearwater Champion. Roland has also represented Great Britain at the World Young Horse Championships in Verden and the CDI in Sydney 2004





**A little information about our master class:**



**Geoff Billington** has been a leading figure on the show jumping circuit for over 30 years. He boasts both European and World Championship team bronze medals and has won numerous grands prix.

He first represented Great Britain again at the Hamburg CSIO in 1981, and has since been a valued member of the Nations Cup teams, appearing no less than 40 times and helping to secure nine victories.

Geoff is most famous for his partnership with the much loved It's Otto, who received the BSJA Team Lifetime Award in 2001. When It's Otto arrived at Geoff's yard as a six-year old Geoff had planned to sell him, but following a chance injury he failed the vetting.

The duo went on to amass over £650,000 winnings, made 15 Nations Cup appearances, were Britain's highest-placed partnership at the 1996 Atlanta Olympics and represented Britain again at the Sydney Olympics in 2000.



Geoff is not only renowned as a horseman, but is also something of an entertainer, known for doing impressions of his fellow riders.

He was awarded the 'Horse & Hound Equestrian Personality of the Year' in 1996, and presented the 'Simply the Best Tour' in partnership with John Whitaker.

